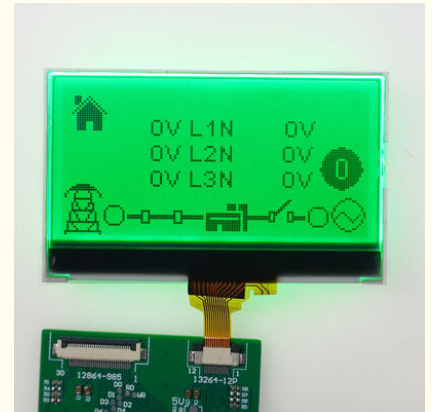


Negative Transmissive VA LCD Display HT1621 Driver RGB LED Backlight LCD Display

Our Product Introduction

Basic Information

- Place of Origin: China
- Brand Name: BBI
- Certification: ISO9001 RoHS
- Model Number: BBI-001
- Minimum Order Quantity: 1000
- Price: 0.78-7USD
- Packaging Details: CARTON
- Delivery Time: 3-4WEEKS
- Payment Terms: T/T
- Supply Ability: 300000/MONTH



Product Specification

- Name: RGB LED Backlight LCD Display
- Driver Ic: SMT_HT1621
- Driving Condition: 5.0 V
- Polarizer Mode: Transmissive
- Transport Package: Carton/Pallet
- View Direction: 12 O'clock
- Storage Temperature: -30~+80
- Highlight: **VA LCD Display HT1621,
Transmissive VA LCD Display,
RGB LED Backlight LCD Display**



for more products please visit us on lcdftscreen.com

Negative Transmissive VA LCD Display HT1621 Driver RGB LED Backlight LCD Display

Product Description

Advantages of VA LCDs:

Superior Contrast and Black Levels :

The **vertical alignment of the liquid crystals** gives VA panels their **deep blacks** and excellent **contrast ratios**. This makes them great for dark-room viewing, movies, and content where high contrast is needed.

Better Viewing Angles than TN:

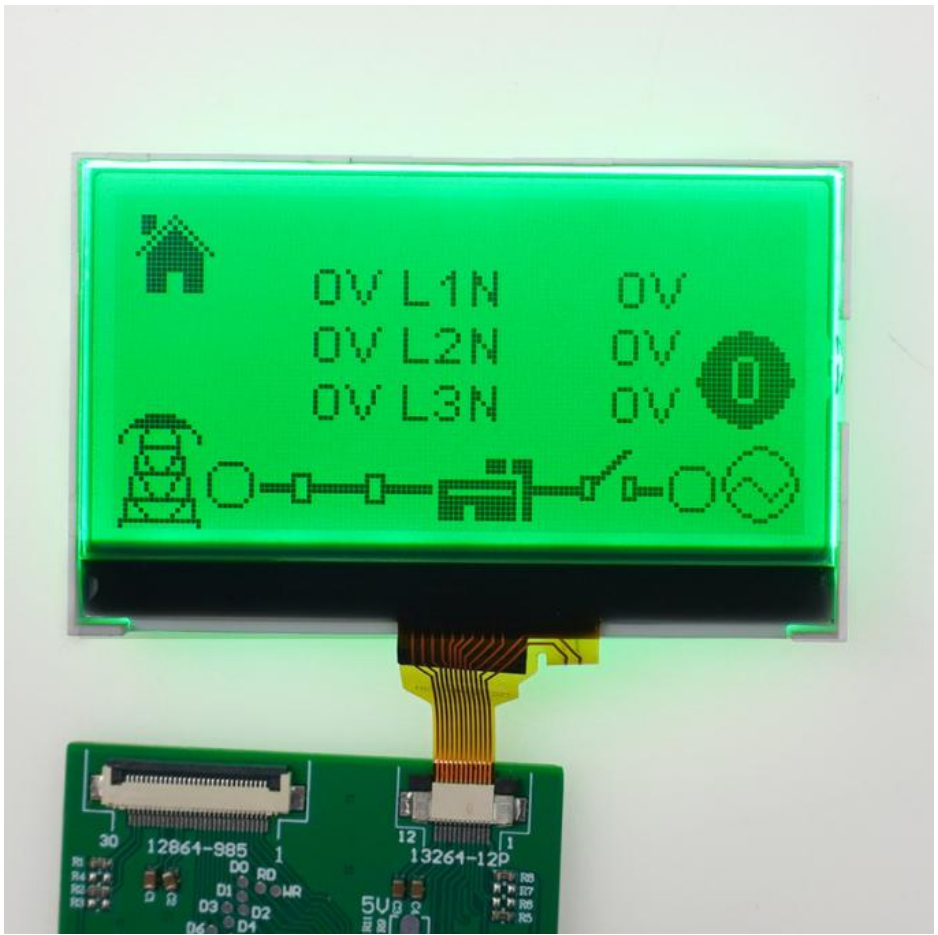
Compared to **TN** panels, VA displays have **wider viewing angles** and maintain **better image quality** when viewed from the side, although not as wide as **IPS** panels.

High Brightness:

VA panels can achieve **high peak brightness levels**, making them suitable for both **bright and dark environments**. However, the peak brightness might still be lower than that of high-end **IPS** or **OLED** displays.

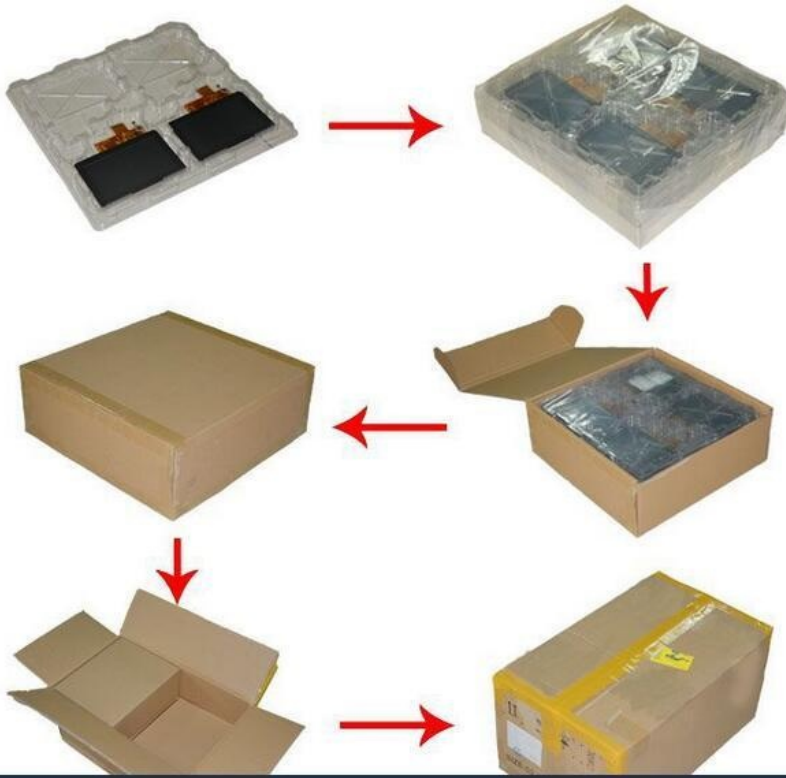
Detailed Parameters:

Product Description	VA LCD Display Black	LCD type	Segmented Display
Module Size	67.01(W)* 40.23(H)* 13(T) mm	Display mode	VA, Negative
LCD viewing area	53.5(W)* 18.9(H) mm	Polarizer type	Transmissive
Driver IC	SMT_HT1621	LED backlight	2PCS RGB SMD LED
Drive method	1/4 Duty, 1/3 Bias	Working voltage	5.0V
Viewing angle	12 O'clock	Connection Way	COB+Zebra
Operate temperature	-20 ~+70	Storage temperature	-30~+80



Packaging & Shipping:

Packaging: Carton boxes, Cupboard , EPE, Blister Tray, About the package way, it is up to the size of products, according to customer request and demand. Different countries have not same requirement..



Shipping: Express way as DHL, Fedex, EMS, UPS, air shipping, sea shipping, Any shipping method you prefer.

					
2-7days	2-8days	2-7days	3-15days	2-5days	2-7days
Notice	1. EMS for Brazil, Russia and Remote areas . 2. SF for Hong Kong, Taiwan, South Korea, Japan, Thailand, Singapore and Malaysia . 3. Having logo product can't be sent by FEDEX . 4. The Brazil want to use FEDEX/DHL , need to offer CNPJ / CPF to us !				

Payment Method:



FAQ:

- 1. I want the LCD display 8 digits and the outline size is 65x30x2.8mm.....?**
 Answer: No problem. Firstly, please kindly send us your specification/ drawing paper
 If you have not the specification, you can also provide your samples; we will recommend the suitable one if it is standard products. Or we can customize for you based on your own requirement.
- 2. This LCD is just what we want, but it is big size, do you have any smaller size? And the display content need to be changed a little.**
 Answer: For the segment type LCD module, if you need modify the outline size or display content, a new LCD glass module is need. We have to open new tooling for you.
- 3. This LCD display is HTN type, but I want STN type, can you make?**
 Answer: That's all right . we can change for you as per you request.
- 4. I want customize a new LCD module. Can you do?**
 Answer: Yes, we can. Please send your drawing paper. If you have not, please advise me the outline size of the LCD display, display information(Glass thickness, Polarizer, Display Type, Connector mode, Storage Temp. Operating Temp. Supply Voltage, Viewing direction, drive condition), we can customize for you.
- 5. What is leading time for tooling?**
 Answer: General speaking, it will cost 15 to 25 days after drawing paper confirmation and tooling charge payment, we can report you the exact time when you confirm the drawing paper.
- 6. Can you send us samples for checking?**
 Answer: Yes,. Samples order is available.
- 7. What is the Leading Time?**
 Answer: If we have stock for the standard ones, the leading time is one day after payment. If it is the mass production for special ones, the leading time is about 15-30 days. suppose we can finish earlier, we will report the information in advanced.

Our Services:

- Free repair within one year after the shipment of products from us.

2. Replacement within 30 days after the shipment of products from us due to products' problems.
3. We can print your logo and stick your model No. on the cameras.
4. We have long cooperation with many shipping companies and our export volume is large. The shipping companies can offer us good discounts.
5. Professional technician supports. We have a good after-sales service team. They can solve your problems in time.
6. All goods will be inspected and tested by our engineers and QC/QA before packing and shipment.
7. Customers satisfactory is most important to us. If you have any problem or questions regarding our transaction. Please contact us by Email or online. It will be responded within 24 hours.
8. Products pictures only for your reference. please kindly refer to the specification. we can provide the products basic on the specification. or you can offer your own specification or drawing , we can customize all kinds of LCD displays for you. thanks for your kind support always.

Product application

Household appliances-refrigerators: air conditioners, fans, hot and cold air heaters, water heaters, electric blankets, heaters, air purifiers, washing machines, clothes dryers, vacuum cleaners, lampblack cleaners, microwave ovens, cookers, electric ovens, rice cookers, water drinkers, tea sets, etc.;

Communication : equipment-telephone, interphone, fax machine, wireless wifi, etc.

Automotive: electronics-on-board entertainment system, automobile fault detector, CarLog, vehicle navigator, car audio, reverse radar, reverse mirror, camera, anti-theft device, etc.

Instruments : water meters, electric meters, multimeter, electronic scales, pressure meters, temperature meters, flow meters, display instruments, electrical instruments, space instruments, measuring instruments, analytical instruments, electrochemical instruments, optical instruments, etc.;

Fitness: equipment-treadmill, waist machine, fitness bike, training device, pedometer, code table, beauty instrument, fat square measuring instrument, fitness instrument, electronic sphygmomanometer, weighing scale, etc.

Financial : tax control-tax control cash machine, pass machine, usb-key cheque printer, banknote counting machine, tax control invoice machine, etc.

Consumer electronics: mp3, mp4, dvd, electronic dictionary, click reader, early teaching machine, learning machine, electronic organ, electronic clock, chronograph, calculator, etc.

high resolution, high definition, high brightness, cost-effective, energy conservation, high temperature, low temperature, Wide Temperature Range, Positive, Negative



Dongguan Bibuke Electronic Technology Co., Ltd.



+8613711912723



Jack@smartwinlcd.cn



lcdftscreen.com

Shangyu Commercial Centre Chang'an, Dongguan, Guangdong, China 523881