

Va Tn LCD Display No Touch Screen 1600x900 Vop 3.0V ,Duty 1/4,Bias 1/3

Our Product Introduction

Basic Information

- Place of Origin: China
- Brand Name: BBI
- Certification: ISO9001 RoHS
- Minimum Order Quantity: 1000
- Price: 0.78-7USD
- Packaging Details: CARTON
- Delivery Time: 3-4WEEKS
- Payment Terms: T/T
- Supply Ability: 300000/MONTH



Product Specification

- Display Color: White
- Type: VA Lcd Display
- View Angle Direction: 12 O'clock
- Operating Temp: -20°C-+70°C
- Customized: Customized
- Luminance: 300 (min),450 (Typ.)
- Highlight: **VA LCD display 1600x900 resolution,
VA LCD screen no touch,
VA LCD display Vop 3.0V**



for more products please visit us on lcdftscreen.com

Product Description

Va Tn LCD Display No Touch Screen 1600x900 Vop 3.0V ,Duty 1/4,Bias 1/3

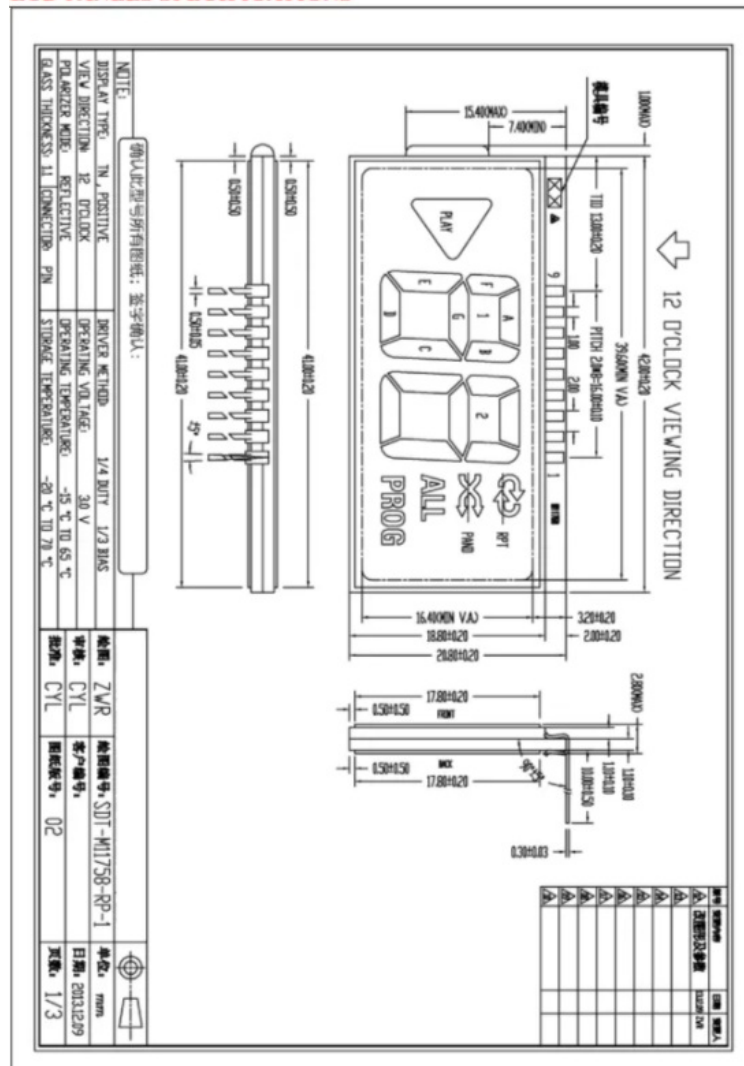
Specifications:

Optimum Resolution	1600x900
Type	TN
Widescreen	Not Widescreen
Response Time	3ms
3D	Not 3D
Interface Type	VGA
Specification	CE FCC ROHS
Trademark	BBI
Origin	China
Display Type :	TN .
Display Mode:	Positive .
Polarizer Mode:	Reflective .
Driving Method:	Vop 3.0V ,Duty 1/4,Bias 1/3 .
Viewing Direction:	12 o'clock .

Dimensional outlines is in accordance with drawing No: SDT-M11758-RP-1 .
Mechanical Specification

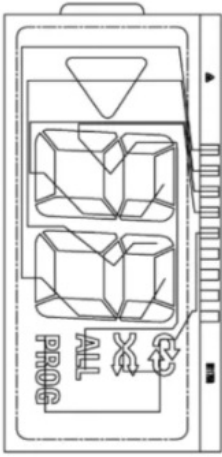
Item	Specifications	Unit
Dimensional Outline	42.00±0.20(L) X20.80±0.20(W) X2.80(MAX)	mm
Viewing Area	39.60±0.20 (L)MIN X16.40(W)MIN	mm
PIN Pitch	2.00	mm
PIN Length	10.00	mm
Number of PIN	9	----

LCD PANELS SPECIFICATIONS

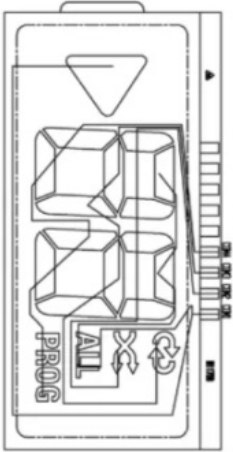


LCD PANELS SPECIFICATIONS

SEG



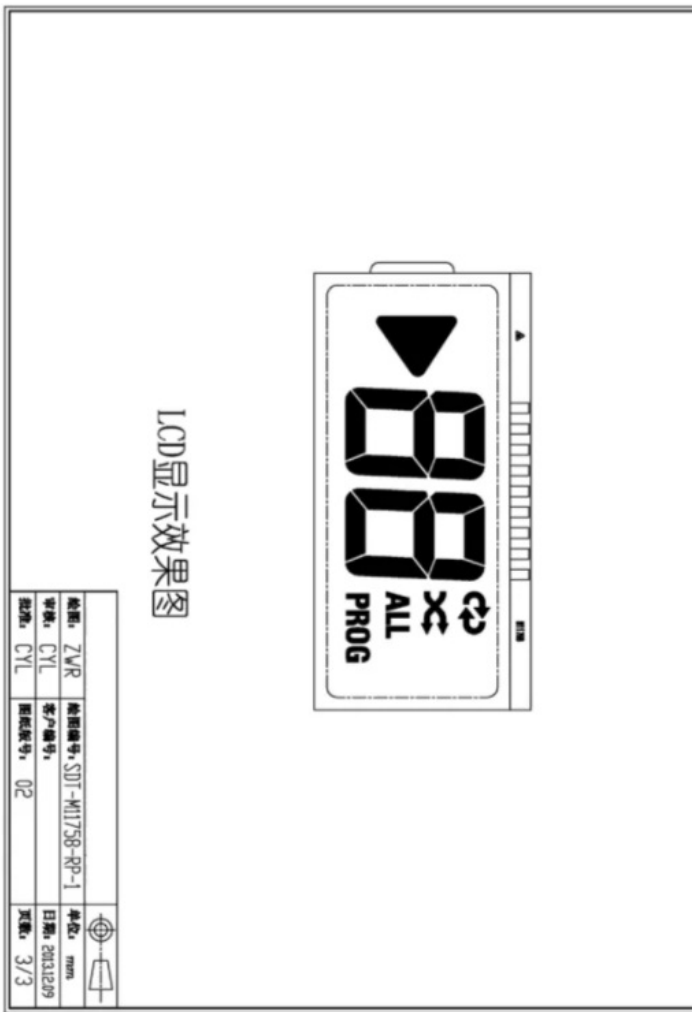
COM



PN	1	2	3	4	5	6	7	8	9
COM	COM				ALL	ALL	HA	RAY	2A
COM		COM			PROG	F	1B	2'	2B
COM			COM		PROG	15	1C	25	2C
COM				COM	PROG	E	1D	2E	2D

規格:	ZWR	規格番号:	SDT-M11758-9P-1	単位:	mm
寸法:	CYL	客户番号:		日期:	2013.12.29
型号:	CYL	规格番号:	02	页数:	2/3

LCD PANELS SPECIFICATIONS



The following are similar products:



Product Applications:

Va Tn LCD Display No Touch Screen

List of Existing COB LCD Modules:

Model	Content CharsXLines	Module size W x H(mm)	View area W x H(mm)	Dot size W x H(mm)	Character size W x H(mm)	Driving Method	Controller LSI or Equiv	IC Package	STN-TYPE	F T
8D- 00000	8X2	84.0X44.0	63.0X25.0	1.15X1.36	6.07X11.56	1/16	S6A0069	COB	Y	Y

C0802A										
8D-C0802B	8X2	58.0X32.0	38.0X16.0	0.56X0.66	2.95X5.56	1/16	S6A0069	COB	Y	Y
8D-C1202A	12X2	55.7X32.0	46.7X17.5	0.45X0.6	2.65X5.5	1/16	S6A0069	COB	Y	Y
8D-C1601A	16X1	80.0X36.0	64.5X13.8	0.55X0.65	3.2X5.95	1/16	S6A0069	COB	Y	Y
8D-C1601B	16X1	122.0X33.0	99.0X13.0	0.92X1.1	4.84X8.06	1/16	S6A0069	COB	Y	Y
8D-C1601C	16X1	80.0X36.0	64.5X13.8	0.6X0.7	3.2X8.2	1/11	S6A0069	COB	Y	Y
8D-C1601D	16X1	85.0X28.0	65.0X16.0	0.55X0.75	3.07X6.56	1/16	S6A0069	COB	Y	Y
8D-C1601E	16X1	80.0X36.0	64.5X13.8	0.55X0.75	3.07X6.56	1/16	S6A0069	COB	Y	Y
8D-C1602A	16X2	80.0X36.0	64.5X13.8	0.55X0.5	2.95X4.35	1/16	S6A0069	COB	Y	Y
8D-C1602B	16X2	122.0X44.0	99.0X24.0	0.92X1.1	4.84X9.66	1/16	S6A0069	COB	Y	Y
8D-C1602C	16X2	80.0X36.0	64.5X15.5	0.55X0.66	2.96X5.56	1/16	S6A0069	COB	Y	Y
8D-C1602D	16X2	84.0X44.0	64.5X15.5	0.55X0.66	2.96X5.56	1/16	S6A0069	COB	Y	Y
8D-C1602E	16X2	85.0X36.0	64.5X15.5	0.56X0.66	2.96X5.56	1/16	S6A0069	COB	Y	Y
8D-C1602F	16X2	72.0X36.0	64.5X15.5	0.56X0.66	2.96X5.56	1/16	S6A0069	COB	Y	Y
8D-C1604A	16X4	87.0X60.0	62.0X25.6	0.55X0.55	2.95X4.75	1/16	S6A0069	COB	Y	Y
8D-C2001A	20X1	116.0X37.0	83.0X18.6	0.6X0.65	3.2X5.55	1/16	S6A0069	COB	Y	Y
8D-C2002A	20X2	98.0X60.0	83.0X18.6	0.6X0.65	3.2X5.55	1/16	S6A0069	COB	Y	Y
8D-C2002B	20X2	116.0X37.0	83.0X18.6	0.6X0.65	3.2X5.55	1/16	S6A0069	COB	Y	Y
8D-C200C	20X2	146.0X43.0	123.0X23.0	0.92X1.1	0.98X1.17	1/16	S6A0069	COB	Y	Y

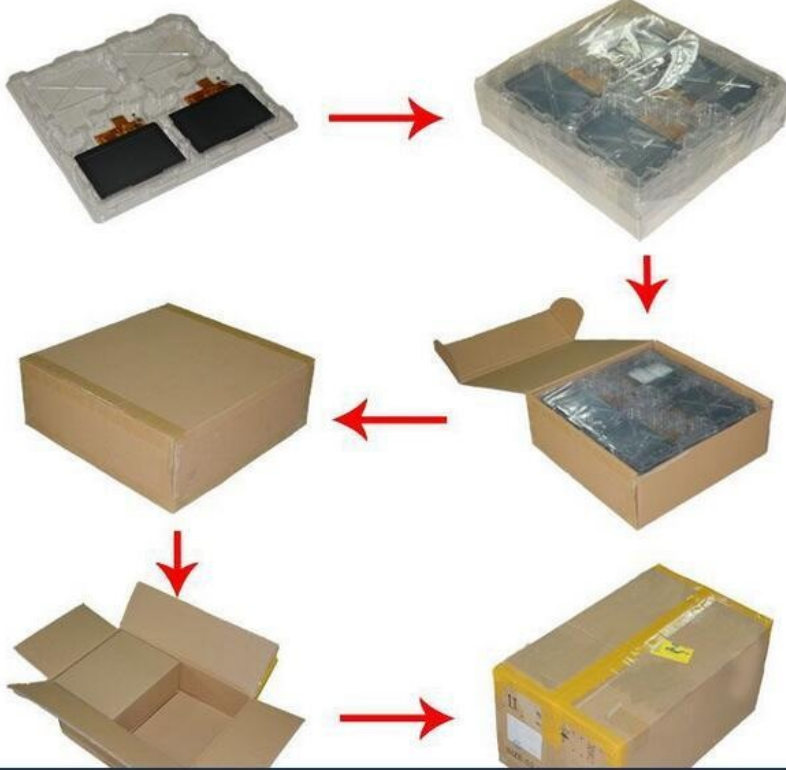
List of Exiting COG LCD Modules:

Model	Content (W X H)	Module size W x H(mm)	View area W x H(mm)	Dot size W x H(mm)	Dot pitch W x H(mm)	Driving Method	Controller LSI or Equiv	IC Package	STN-TYPE	FE T)
8D-C2004A	20X4	98.0X60.0	76.0X25.2	0.55X0.55	2.95X4.75	1/16	S6A0069	COB	Y	Y
8D-C2004B	20X4	77.0X47.0	60.0X22.0	0.42X0.46	2.3X4.03	1/16	S6A0070	COB	Y	Y
8D-C2004C	20X4	146.0X62.5	123.5X43.0	0.92X1.1	4.84X9.22	1/16	S6A0069	COB	Y	Y
8D-C2402A	24X2	118.0X36.0	93.5X16.0	0.6X0.65	3.2X5.55	1/16	S6A0069	COB	Y	Y
8D-C2402B	24X2	208.0X40.0	178.0X23.0	1.16X1.16	6.0X9.63	1/16	S6A0069	COB	Y	Y
8D-C4001A	40X1	182.0X33.5	154.4X16.5	0.6X0.75	3.2X6.35	1/16	S6A0069	COB	Y	Y
8D-C4002B	40X2	182.0X33.5	154.4X16.5	0.6X0.65	3.2X5.55	1/16	S6A0069	COB	Y	Y
8D-C4004A	40X4	190.0X54.0	147.0X29.5	0.5X0.55	2.78X4.89	1/16	S6A0069	COB	Y	Y
8D-G12232A	122X32	84.0X44.0	60.0X18.5	0.4X0.4	0.44X0.44	1/32	SED1520	COB	Y	Y
8D-G12232B	122X32	80.0X36.0	55.0X18.5	0.36X0.41	0.4X0.45	1/32	SED1520	COB	Y	Y
8D-G12232C	122X32	98.0X60.0	76.0X25.2	0.53X0.61	0.57X0.65	1/32	SED1520	COB	Y	Y
8D-G12232D	122X32	80.2X47.4	76.0X25.2	0.53X0.61	0.57X0.65	1/32	SED1520	COB	Y	Y
8D-G12864A	128X64	78.0X70.0	62.0X44.0	0.39X0.55	0.44X0.6	1/64	S6B0108A	COB	Y	Y
8D-G12864B	128X64	105.0X60.5	72.0X40.0	0.48X0.48	0.52X0.52	1/64	S6B0108A	COB	Y	Y
8D-G12864C	128X64	93.0X70.0	72.0X40.0	0.48X0.48	0.52X0.52	1/64	S6B0108A	COB	Y	Y
8D-G12864D	128X64	113.0X65.0	72.0X40.0	0.48X0.48	0.52X0.52	1/64	S6B0108A	COB	Y	Y
8D-G12864E	128X64	93.0X70.0	72.0X40.0	0.48X0.48	0.52X0.52	1/64	ST7920	COB	Y	Y
8D-G19264A	192X64	130X65.0	104.0X39.0	0.46X0.46	0.51X0.51	1/64	S6B0108A	COB	Y	Y
8D-G19264B	192X64	130X65.0	104.0X39.0	0.46X0.46	0.51X0.51	1/64	S6B0108A	COB	Y	Y

8D -G19264B	192X64	120X62.0	0	0.46X0.46	0.51X0.51	1/64	S6BU108A	COB	Y	Y
8D -G24064B	240X64	180.0X65.0	132.0X39.0	0.53X0.53	0.49X0.49	1/64	T6963C	QFP/COB	Y	Y
8D -G240128A	240X128	144X104	114X64	0.4X0.4	0.45X0.45	1/128	T6963C	QFP/COB	Y	Y

Packaging & Shipping:

Packaging: Carton boxes, Cupboard , EPE, Blister Tray, About the package way, it is up to the size of products, according to customer request and demand. Different countries have not same requirement..



Shipping: Express way as DHL, Fedex, EMS, UPS, air shipping, sea shipping, Any shipping method you prefer.

					
2-7days	2-8days	2-7days	3-15days	2-5days	2-7days
<p>Notice</p> <ol style="list-style-type: none"> 1. EMS for Brazil, Russia and Remote areas . 2. SF for Hong Kong, Taiwan, South Korea, Japan, Thailand, Singapore and Malaysia . 3. Having logo product can't be sent by FEDEX . 4. The Brazil want to use FEDEX/DHL , need to offer CNPJ / CPF to us ! 					

Payment Method:



FAQ:

1. I want the LCD display 8 digits and the outline size is 65x30x2.8mm.....?

Answer: No problem. Firstly, please kindly send us your specification/ drawing paper
If you have not the specification, you can also provide your samples; we will recommend the suitable one if it is standard products. Or we can customize for you based on your own requirement.

2. This LCD is just what we want, but it is big size, do you have any smaller size? And the display content need to be changed a little.

Answer: For the segment type LCD module, if you need modify the outline size or display content, a new LCD glass module is need. We have to open new tooling for you.

3. This LCD display is HTN type, but I want STN type, can you make?

Answer: That's all right . we can change for you as per you request.

4. I want customize a new LCD module. Can you do?

Answer: Yes, we can. Please send your drawing paper. If you have not, please advise me the outline size

of the LCD display, display information(Glass thickness, Polarizer, Display Type, Connector mode, Storage Temp. Operating Temp. Supply Voltage, Viewing direction, drive condition), we can customize for you.

5. What is leading time for tooling?

Answer: General speaking, it will cost 15 to 25 days after drawing paper confirmation and tooling charge payment, we can report you the exact time when you confirm the drawing paper.

6. Can you send us samples for checking?

Answer: Yes,. Samples order is available.

7. What is the Leading Time?

Answer: If we have stock for the standard ones, the leading time is one day after payment. If it is the mass production for special ones, the leading time is about 15-30 days. suppose we can finish earlier, we will report the information in advanced.

Our Services:

1. Free repair within one year after the shipment of products from us.
2. Replacement within 30 days after the shipment of products from us due to products' problems.
3. We can print your logo and stick your model No.on the cameras.
4. We have long cooperation with many shipping companies and our export volume is large. The shipping companies can offer us good discounts.
5. Professional technician supports. We have a good after-sales service team. They can solve your problems in time.
- 6.All goods will be inspected and tested by our engineers and QC/QA before packing and shipment.
- 7.Customers satisfactory is most important to us.If you have any problem or questions regarding our transaction.Please contact us by Email or online. It will be responded within 24 hours.
- 8.Products pictures only for your referece. please kindly refer to the specification. we can provide the products basic on the specification. or you can offer your own specification or drawing , we can customize all kinds of LCD displays for you. thanks for your kind support always.



Dongguan Bibuke Electronic Technology Co., Ltd.



+8613711912723



Jack@smartwinlcd.cn



lcdftscreen.com

Shangyu Commercial Centre Chang'an, Dongguan, Guangdong, China 523881