

2.0 Inch TFT LCD Display Module with 320 X 240 Resolution and Transflective TFT Screen

Our Product Introduction

for more products please visit us on lcdtftscreen.com

Basic Information

- Place of Origin: China
- Brand Name: BBI
- Certification: ISO90001 RoHS
- Minimum Order Quantity: 1000
- Price: 0.7-7USD
- Packaging Details: CARTON
- Delivery Time: 3-47WEEKS
- Payment Terms: T/T
- Supply Ability: 100000/MONTH



Product Specification

- Backlight Type: LED
- Resolution: 320*240 Pixels
- Display Type: TFT LCD
- Luminance: 250cd/m2
- Panel Type: IPS
- Backlight: White LED
- Highlight: 2.0 inch TFT LCD display,
320x240 transflective LCD module,
ILI9342C LCD module with IC



2.0 Inch TFT LCD Display 320×240 Transflective LCD Module with IC ILI9342C

Product Introduction

Basic Parameters

Size and Resolution: 2.0-inch diagonal screen with 320×240 pixel resolution and small pixel pitch for clear image display. Effective display area: 40.8mm×30.6mm.

Display Characteristics: Transparent TFT technology with TN display mode, capable of displaying 16.7M colors. Contrast ratio: 500:1, brightness: 300-700cd/m² (varies by product).

Driver Chip: Equipped with ILI9342C driver chip with strong image processing capabilities, supporting various interface methods including RGB and SPI. Common module interface: 40Pin FPC.

Operating Conditions: Operating temperature: -20 to 70 , storage temperature: -30 to 80 . Supply voltage: 3.3V.

Shape and Structure: Rectangular shape with thin profile (approximately 2.53mm thickness), ideal for integration into small devices.

Product Applications

Consumer Electronics: Digital cameras, mobile phones - displays photos and menu interfaces with clarity.

Industrial Equipment: Industrial displays, instruments - operates reliably in harsh environments (-20 to 70) to show equipment parameters and status information.

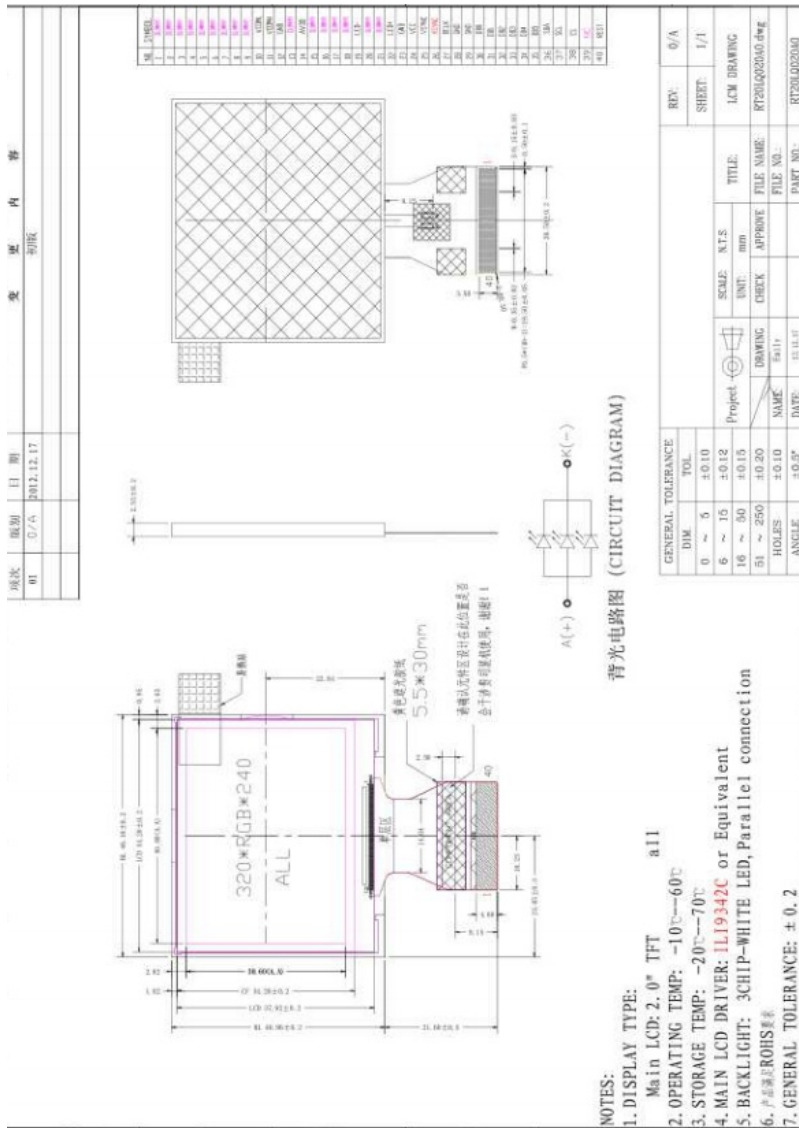
Smart Devices: Smart wristbands, smart watches, portable medical devices - displays data and operation interfaces for intuitive user interaction.

Handheld Devices: Game consoles, PDAs - provides clear game scenes, text information, and operation interfaces.

Product Specifications

Resolution	320 × 240
Size	2.0 Inch
Viewing Direction	IPS
TFT Mode	TFT, Transflective
Outline Size	46.1 × 40.96 mm × 2.53
Brightness	250 cd/m ²

Item	Contents	Description
1	Product Name	2.0 Inch TFT LCD Display 320×240 Transflective LCD Module with IC ILI9342C
2	Module Size	46.1 mm × 40.96 mm × 2.53 mm T
3	Resolution	320 × 240
4	Panel Type	a-si TFT
5	View Angle	Wide Viewing
6	LCD Type	Transreflective TFT, 262K Color
7	Pins Number	40 Pins
8	Controller / Driver	ILI9342C



Frequently Asked Questions

I want the LCD display 8 digits and the outline size is 65x30x2.8mm?

No problem. Firstly, please kindly send us your specification/drawing paper. If you have not the specification, you can also provide your samples; we will recommend the suitable one if it is standard products. Or we can customize for you based on your own requirement.

This LCD is just what we want, but it is big size, do you have any smaller size? And the display content need to be changed a little.

For the segment type LCD module, if you need modify the outline size or display content, a new LCD glass module is need. We have to open new tooling for you.

This LCD display is HTN type, but I want STN type, can you make?

That's all right. We can change for you as per you request.

I want customize a new LCD module. Can you do?

Yes, we can. Please send your drawing paper. If you have not, please advise me the outline size of the LCD display, display information (Glass thickness, Polarizer, Display Type, Connector mode, Storage Temp., Operating Temp., Supply Voltage, Viewing direction, drive condition), we can customize for you.



Dongguan Bibuke Electronic Technology Co., Ltd.



+8613711912723



Jack@smartwinlcd.cn



lcdftscreen.com

Shangyu Commercial Centre Chang'an, Dongguan, Guangdong, China 523881