

## White Backlight Custom LCD Screen HTN Segmented 28PIN Energy Meter LCD Display

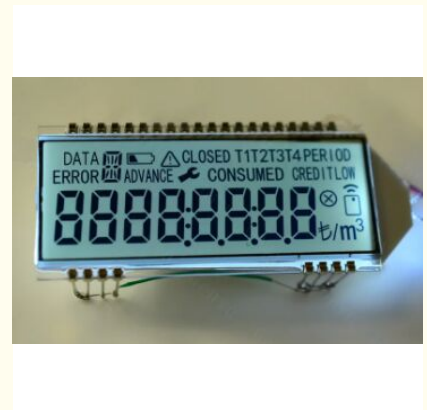
### Basic Information

- Place of Origin: China
- Brand Name: BBI
- Certification: ISO90001 RoHS
- Minimum Order Quantity: 1000
- Price: 0.7-7USD
- Packaging Details: CARTON
- Delivery Time: 3-47WEEKS
- Payment Terms: T/T
- Supply Ability: 100000/MONTH



### Product Specification

- Connection Way: PIN
- Backlight: White
- Display Color: Customizable
- Operating Temperature: -20°C To 70°C
- Display Size: Customizable
- Display Type: Segment
- Number Of Segments: CUSTOM
- Segment Size: Customizable
- Highlight: **White backlight HTN LCD display, 28PIN energy meter LCD screen, Custom segmented LCD display**



## Product Description

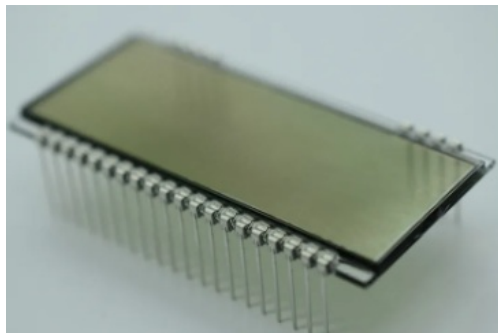
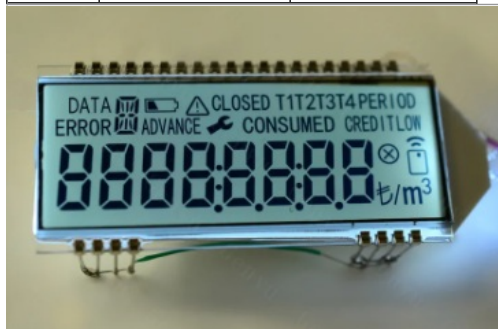
### White Backlight Custom LCD Screen HTN Segmented 28PIN Energy Meter LCD Display

#### Detail Information

LCD Type:	HTN Positive
Polarizer Type:	Transmissive
Viewing Angle:	6 O'clock
Operating Temperature:	-30~+70
Working Voltage:	3.2V
Connector:	PIN, 28 Numbers
Backlight:	White LEDs

#### Product Description

NO.	ITEM	SPECIFICATIONS
1	LCD Type	HTN positive, Transmissive
2	Viewing Angle	6 O'clock
3	Drive Method	1/4 Duty, 1/3 Bias, VDD=3.2V
4	Operating Temperature	-30~+70
5	Storage Temperature	-30~+85
6	Connector	PIN
7	PIN Pitch	2.54 mm
8	Backlight	White LEDs
9	Driver IC	/
10	Outline Dimension	61(W)* 29(H)* 2.8(T) mm
11	View Area	59(W)* 22(H) mm



White backlit custom LCD screen HTN segmented 28PIN electric energy meter LCD display is a liquid crystal display used for displaying information on electric energy meters. It has the following features:

**HTN technology:** HTN stands for High Twisted Nematic, which is an improved version of TN. The twisting angle of the liquid crystal molecules has been increased to 180° to 270°, and a  $\pi$ -cell compensation film has been introduced, allowing the viewing angle to be expanded to  $\pm 120^\circ$ , the contrast to be increased to 30:1, the temperature resistance to be enhanced, and it can adapt to an environment ranging from -30°C to 80°C.

**White backlight:** The liquid crystal itself does not emit light; it requires a backlight source to provide illumination. The white backlight enables the screen to display clearly even in dim light conditions. The display effect with a white background and black text has a high contrast ratio, making it easy to read data.

**Segmented display:** This display adopts a segmented design, using the control of different segments to present numbers, symbols, etc. It is suitable for devices like electric energy meters that have relatively simple and fixed display content.

**28PIN interface:** The 28PIN (pin) interface is used to connect circuit boards and other components, enabling signal transmission and power supply, ensuring stable communication between the display and the main control chip and other devices of the electric energy meter.

**Customization features:** It can be customized according to the design requirements of different electric energy meters, including screen size, display content layout, interface type, etc., to meet the personalized display needs of various electric energy meters.



**Dongguan Bibuke Electronic Technology Co., Ltd.**



+8613711912723



Jack@smartwinlcd.cn



lcdftscreen.com

Shangyu Commercial Centre Chang'an, Dongguan, Guangdong, China 523881