

2.8 Inch LCD Display Module with 240 * 320 Dots Matrix and 65K Colors for High-Resolution Touch Screen Applications

Our Product Introduction

Basic Information

- Place of Origin: China
- Brand Name: BBI
- Certification: ISO90001 RoHS
- Minimum Order Quantity: 1000
- Price: 0.7-7USD
- Packaging Details: CARTON
- Delivery Time: 3-47WEEKS
- Payment Terms: T/T
- Supply Ability: 100000/MONTH



Product Specification

- Colors: 65K
- Viewing: 6:00
- Backlight Color: White
- Visible Area Size: 43.2mm×57.6mm
- Outline Size: 50 Mm * 69.20 Mm * 2.30 Mm
- Bcaklight: 4 Pcs White LED
- Highlight: **2.8 Inch LCD Display Module,
240 * 320 Dots Matrix LCD Display Module,
65K Colors LCD Display Module**



for more products please visit us on lcdftfscreen.com

2.8 Inch LCD Display Module Touch Screen 240 * 320 Dots Matrix SPI Interface

High-quality 2.8-inch TFT LCD display module with touch screen capability, featuring 240x320 resolution and SPI interface.

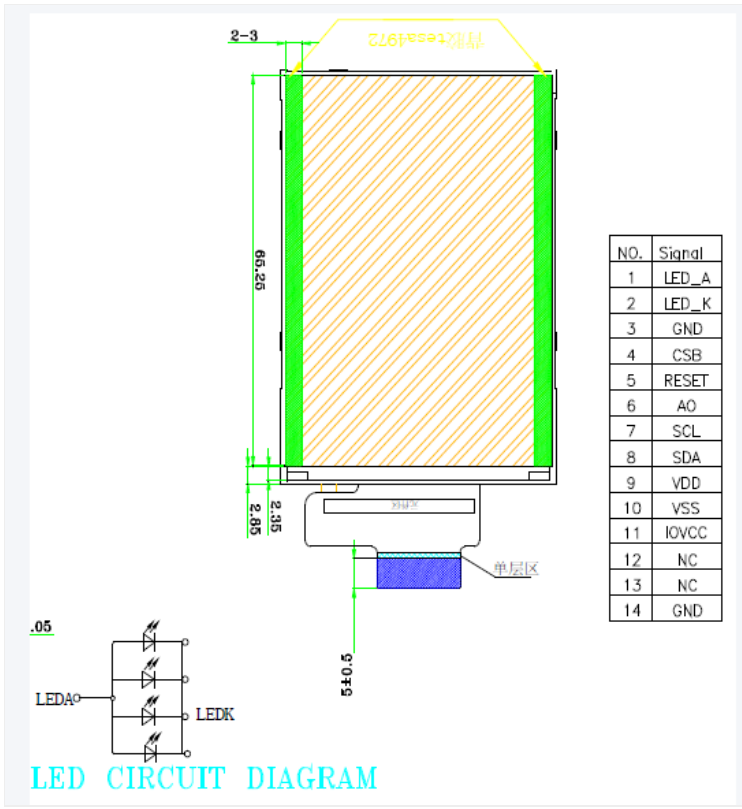
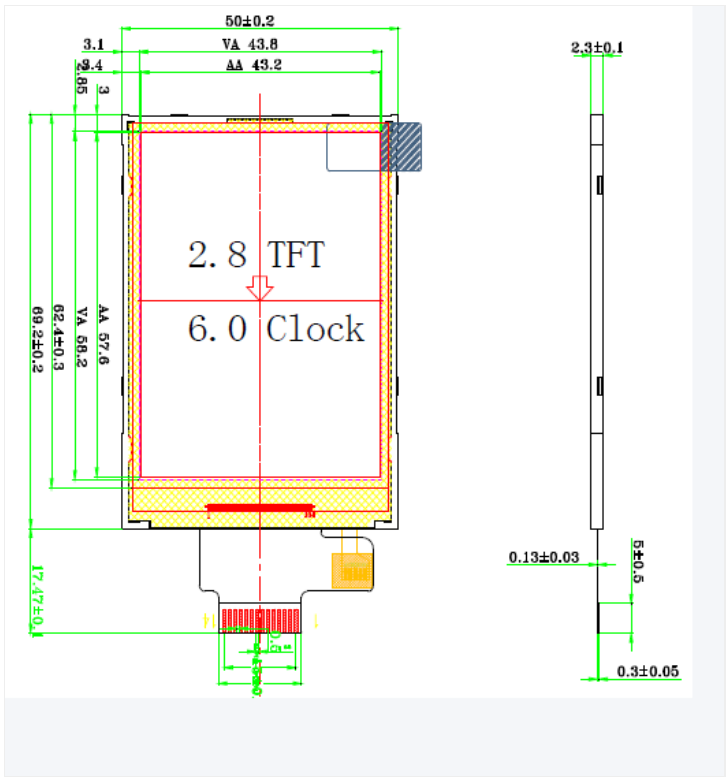
Product Specifications

Parameter	Value
Resolution	240 × 320
Size	2.8 Inch
Viewing Direction	6 O'Clock
TFT Mode	TFT, Transmissive
Outline Size	50 × 69.20 × 2.3 mm
Brightness	280 Cd/M2

Technical Details

Item	Contents	Description
1	Product Name	2.8 Inch TFT 240RGB × 320 LCD Module
2	Module Size	50 mm × 69.20 mm × 2.30 mm T
3	Resolution	240 × 320
4	Interface	SPI
5	Touch-Panel Type	RESISTIVE or WITHOUT, CAPACITIVE
6	Interface Type	16 Bit MCU
7	Colors	65K
8	Controller/Driver	ST7789V
9	Light Source	4 White LEDs in Parallel

Structure Diagram



LED CIRCUIT DIAGRAM





Application Fields

Consumer Electronics: MP4 players, digital cameras, portable game consoles - providing excellent visual experiences and convenient touch operations.

Industrial Control: Display interface for industrial instruments and control panels, showing real-time equipment status and parameters with high reliability.

Vehicle Electronics: Navigation devices, driving recorders - offering clear route guidance and vehicle information with touch operation convenience.

Medical Equipment: ECG machines, blood pressure monitors - helping medical staff quickly access patient information to improve diagnosis efficiency.

Frequently Asked Questions

1. I want the LCD display 8 digits and the outline size is 65x30x2.8mm?

Answer: No problem. Please send us your specification/drawing paper. If you don't have specifications, you can provide samples; we'll recommend suitable standard products or customize based on your requirements.

2. This LCD is just what we want, but it is big size, do you have any smaller size? And the display content need to be changed a little.

Answer: For segment type LCD modules, modifying outline size or display content requires a new LCD glass module with new tooling.

3. This LCD display is HTN type, but I want STN type, can you make?

Answer: Yes, we can change the display type according to your request.

4. I want to customize a new LCD module. Can you do?

Answer: Yes, we can. Please send your drawing paper or provide details including outline size, display information (glass thickness, polarizer, display type, connector mode, storage/operating temperature, supply voltage, viewing direction, drive condition).

5. What is lead time for tooling?

Answer: Typically 15 to 25 days after drawing confirmation and tooling charge payment. We'll provide exact timing upon drawing confirmation.

6. Can you send us samples for checking?

Answer: Yes, sample orders are available.

7. What is the Lead Time?

Answer: For standard products in stock, lead time is one day after payment. For mass production of special orders, lead time is about 15-30 days. We'll inform you if we can finish earlier.

 +8613711912723  Jack@smartwinlcd.cn  lcdftscreen.com

Shangyu Commercial Centre Chang'an, Dongguan, Guangdong, China 523881