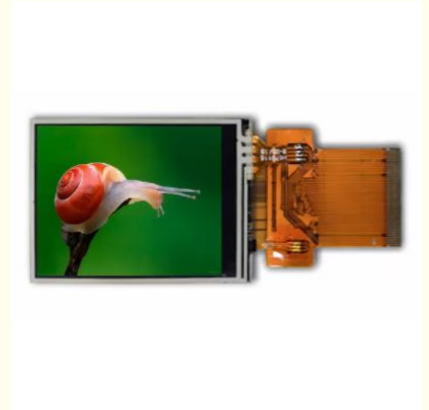


1.77 Inch TFT LCD Screen with 128x126 Dots Resolution and 160 Nits Brightness for Compact Display Applications

Basic Information

- Place of Origin: China
- Brand Name: BBI
- Certification: ISO90001 RoHS
- Minimum Order Quantity: 1000
- Price: 0.7-7USD
- Packaging Details: CARTON
- Delivery Time: 3-47WEEKS
- Payment Terms: T/T
- Supply Ability: 100000/MONTH



Product Specification

- Module Size: 34.0 * 42.9 Mm * 2.2 T
- Lcd Type: IPS
- Touchscreen: Customized
- Screen Type: TFT
- Interface: MCU 8080-8BIT
- Luminance: 160cd/m2
- Size: 1.77 Inches
- Backlight Technology: LED
- Highlight: **1.77 Inch TFT LCD Screen,
128x126 Dots LCD Display,
160 Nits TFT LCD Module**



Product Description

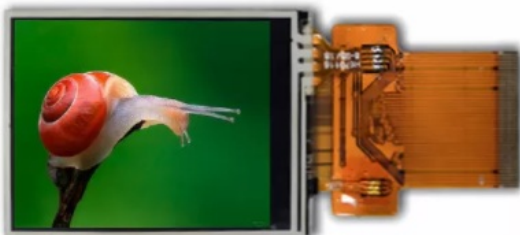
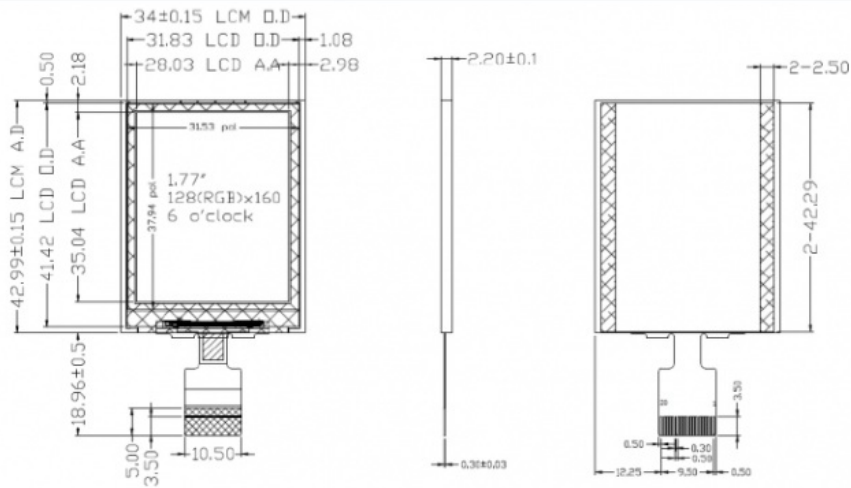
1.77 Inch TFT LCD Module 128x126 Dots 160 Nits LCD TFT Screen

This compact 1.77-inch TFT LCD module features a resolution of 128x160 dots and 160 nits brightness, designed for small-space information display applications.

Key Specifications

Resolution	128 × 160
Size	1.77 Inch
Viewing Direction	RGB
TFT Mode	TFT, Transmissive
Outline Size	34.0 × 42.9 mm × 2.2 T
Brightness	160 Nits
Pixel Pitch (W × H)	0.218 (H) × 0.218 (V)
Number of Colors	262K
Viewing Angle	6 O'Clock
Technology Type	a-Si TFT
Backlight Type	2 LEDs White LED
Interface Type	MCU 8080-8BIT
Controller/Driver	ST7735S

Structure Diagram





Product Overview

This compact 1.77-inch TFT LCD module (128×160 resolution, 160 nits brightness) is designed for small-sized, entry-level display applications requiring basic information visualization in space-constrained environments.

Key Features

- Compact size ideal for small devices
- Cost-effective solution compared to traditional displays
- Superior display quality for basic information
- Low power consumption design
- Reliable performance in indoor/weak light conditions

Application Scenarios

Consumer Electronics

Ideal for portable devices requiring small displays with basic information visualization:

- Mini MP3/MP4 players (displaying song names, playback progress)
- Portable voice recorders (recording duration, file format)
- Smart home control panels (power status, WiFi connection)
- Vehicle auxiliary equipment (tire pressure data, Bluetooth player info)

Smart Wearables

Perfect for lightweight wearable devices with basic data display needs:

- Entry-level smart bracelets/watches (time, steps, heart rate)
- Bluetooth anti-loss devices (connection status, signal strength)
- Mini exercise counters (exercise count, calorie estimation)

Industrial & IoT

Suitable for small industrial devices requiring status monitoring:

- Industrial sensor terminals (temperature, pressure values)
- IoT node devices (connected devices count, network signal)
- Device control panels (speed, operating mode, printing progress)

Medical Health

Ideal for portable medical monitoring devices:

- Electronic thermometers (temperature values)
- Oximeters (oxygen saturation, heart rate)
- Blood glucose analyzers (glucose levels, measurement time)

Other Applications

- Toys and models (status screens, interaction displays)
- Instrumentation (measurement values, units)
- Smart card devices (student information, access permissions)

Available COB LCD Modules

Model	Content	Module Size (W×H mm)	View Area (W×H mm)	Dot Size (W×H mm)	Character Size (W×H mm)	Driving Method	Controller LSI	IC Package	STN-TYPE	FSTN-TYPE
8D-C0802 A	8×2	84.0×44.0	63.0×25.0	1.15×1.36	6.07×11.56	1/16	S6A0069	COB	Y	Y

Product Demonstration



Dongguan Bibuke Electronic Technology Co., Ltd.



+8613711912723



Jack@smartwinlcd.cn



lcdftscreen.com

Shangyu Commercial Centre Chang'an, Dongguan, Guangdong, China 523881