

5.7 Inch TFT LCD Screen with 320x240 Resolution and 262K Colors for Industrial Equipment

Our Product Introduction

Basic Information

- Place of Origin: China
- Brand Name: BBI
- Certification: ISO90001 RoHS
- Minimum Order Quantity: 1000
- Price: 0.7-7USD
- Packaging Details: CARTON
- Delivery Time: 3-47WEEKS
- Payment Terms: T/T
- Supply Ability: 100000/MONTH



Product Specification

- Colors: 262K
- Connectivity: RGB
- Operating Temperature: -20~+70
- Product Type: TFT LCD Screen
- Resolution: 320*240 Pixels
- Screen Size: 5.7 Inches
- Touch Screen: Customized
- VA Size: 115.2 * (H) * 89.4 (W) Mm
- Highlight: **5.7 Inch TFT LCD Screen ,
320x240 Resolution LCD Display Module,
262K Colors TFT Display**



for more products please visit us on lcdtftscreen.com

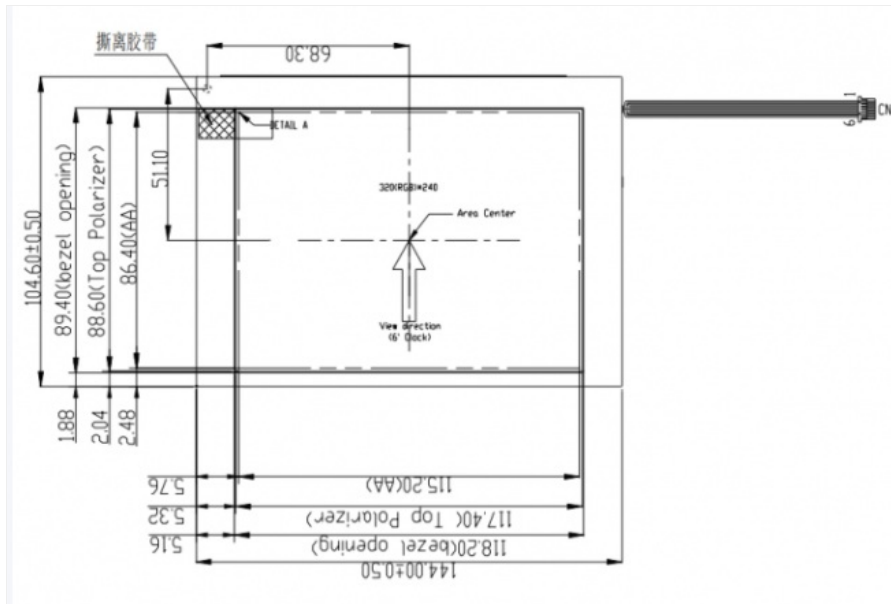
Product Description

5.7 Inch RGB TFT LCD Screen Module 320 * 240 For Industrial Equipment

Product Specifications

ITEM	CONTENT	DESCRIPTION
1	Display outline size	144.6 (H) * 104.6 (W) * 12.8 mm (T)
2	VA size	115.2 (H) * 89.4 (W) mm
3	Resolution	320 RGB (H) x 240 (V)
4	With/Without Touch screen	Customized
5	Interface	RGB 18-bits
6	Backlight	15 Led
7	Color	262K
8	Drive IC	NT39413T

Structure Diagram





Major Parameters

- Resolution:** 320×240 pixels (QVGA), suitable for displaying menus, data, and status indicators in industrial equipment
- Brightness:** Available in 400cd/m², 600cd/m², and 800cd/m² options
- Contrast:** Typically between 400:1 and 800:1
- Interface:** RGB interface with support for other interface types
- Operating Temperature:** -20 to +70 (Storage: -30 to +80)

Features and Advantages

- Display Quality:** TFT technology provides excellent color reproduction (262K colors) and fast response time
- High Reliability:** Industrial-grade durability for harsh environments (temperature, vibration, dust)
- Touch Options:** Available with projected capacitive touch screen (PCAP) supporting 5-point touch
- Versatile Connectivity:** Multiple interface types for easy integration with various control systems
- Certifications:** Compliant with industrial standards including RoHS

Application Scenarios

- Industrial Control:** Human-machine interface (HMI) for equipment status monitoring and parameter adjustment
- Automation Systems:** Real-time display of alarm information and operation menus
- Robotics:** Display of path planning and torque feedback data for precise control

Frequently Asked Questions

1. I want the LCD display 8 digits and the outline size is 65x30x2.8mm?

We can accommodate custom specifications. Please provide your detailed requirements or samples, and we'll recommend or customize the appropriate solution.

2. This LCD is just what we want, but it is big size, do you have any smaller size?

For segment type LCD modules requiring size or content modifications, we can create new tooling to produce custom units matching your specifications.

3. This LCD display is HTN type, but I want STN type, can you make?

Yes, we can modify the display type (HTN to STN) according to your requirements.

4. I want to customize a new LCD module. Can you do?

We specialize in custom LCD solutions. Please provide your specifications including outline size, display information, glass thickness, polarizer type, connector mode, temperature requirements, and viewing direction.

5. What is the lead time for tooling?

Standard tooling lead time is 15-25 days after drawing confirmation and payment. We'll provide exact timelines upon project confirmation.

6. Can you send us samples for checking?

Yes, sample orders are available for standard products.

7. What is the lead time?

Standard products ship within 1 day if in stock. Custom production typically takes 15-30 days, with possible earlier completion.



Dongguan Bibuke Electronic Technology Co., Ltd.



+8613711912723



Jack@smartwinlcd.cn



lcdftscreen.com

Shangyu Commercial Centre Chang'an, Dongguan, Guangdong, China 523881