

3.5 Inch TFT LCD Touch Screen with 320(RGB)×480 High Resolution and 220 Cd/m2 Backlight Luminance

Our Product Introduction

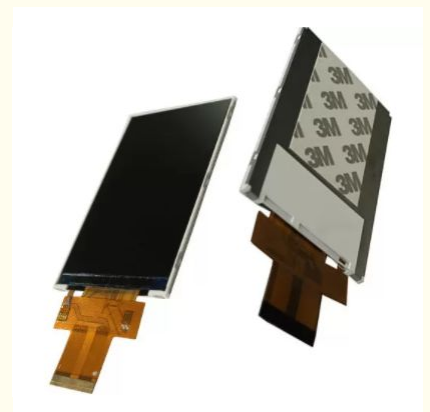
Basic Information

- Place of Origin: China
- Brand Name: BBI
- Certification: ISO90001 RoHS
- Minimum Order Quantity: 1000
- Price: 0.7-7USD
- Packaging Details: CARTON
- Delivery Time: 3-47WEEKS
- Payment Terms: T/T
- Supply Ability: 100000/MONTH



Product Specification

- Tft Active Area: 48.96*73.44
- Viewing Direction: 12 O'clock
- Pixel Configuration: R.G.B. Vertical Stripe
- Backlight Luminance: 220 Cd/m2
- Lcd Type: STN Positive
- Supplier Type: Manufacturer
- Driver Ic: ST7796S
- Size: 3.5inch
- Highlight: **220 Cd/m2 Backlight Luminance TFT LCD Touch Screen**
, 320(RGB)×480 Resolution TFT LCD Display,
High Resolution Touch Screen Display



for more products please visit us on lcdtftscreen.com

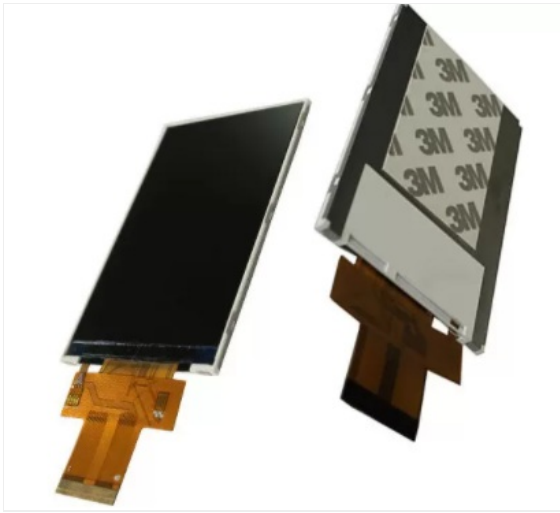
3.5 Inch TFT LCD Display High Resolution Touch Screen With Resistive Panel

Product Details

Resolution:	320(RGB)×480
Display Mode:	Transmissive / Normally White
Display Type:	STN Positive
Viewing Direction:	12 O'clock
Outline Size:	55.26*84.69*2.25
Viewing Size:	48.96*73.44

Product Description

Display Specifications	
LCD type	3.5 inch
Resolution (H*V)	320(RGB)×480
Technology Type	a-Si TFT
Pixel Configuration	R.G.B. Vertical Stripe
Display Mode	Transmissive / Normally White
Viewing Direction	12 o'clock
Gray Scale Inversion Direction	6 o'clock
Mechanical Characteristics	
Outline Dimensions (W x H x T) (mm)	55.26*84.69*2.25
Active Area(mm)	48.96*73.44
With/Without Touch screen	Without (TP optional)
Connector	W:0.35, P:0.5
Backlight Type	White LED
Weight (g)	TBD
Electrical Characteristics	
Interface	MCU 8bit
Number of color	262K
Driver IC	ST7796S



The 3.5-inch TFT resistive touch screen is a compact high-resolution display solution featuring clear visuals and precise touch response. Ideal for diverse applications requiring reliable performance.

Key Features

- Compact Design:** 3.5-inch size offers portability without compromising functionality
- Advanced Display:** TFT technology delivers rich colors, high contrast, and sharp details
- Precise Touch:** Resistive panel supports single-point accurate input with pressure activation
- Durable Construction:** Resistant to environmental factors like dust and moisture
- Cost-Effective:** Simple structure provides reliable performance at competitive pricing

Applications

- Industrial Control:** PLC panels, equipment operation screens, industrial terminals
- Consumer Electronics:** Early smartphones, portable navigators, handheld gaming devices
- Smart Home:** Access control panels, appliance interfaces, security terminals
- Medical Equipment:** Monitoring devices, diagnostic equipment, portable medical tools
- Automotive:** In-vehicle entertainment systems, navigation displays, dash cams



Dongguan Bibuke Electronic Technology Co., Ltd.



+8613711912723



Jack@smartwinlcd.cn



lcdtftscreen.com

Shangyu Commercial Centre Chang'an, Dongguan, Guangdong, China 523881