

6.5 Inch TFT LCD Display with 800 x 320 Dots Resolution and 24 RGB Interface

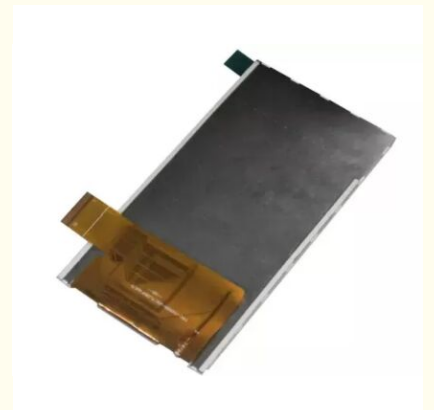
Basic Information

- Place of Origin: China
- Brand Name: BBI
- Certification: ISO90001 RoHS
- Minimum Order Quantity: 1000
- Price: 0.7-7USD
- Packaging Details: CARTON
- Delivery Time: 3-47WEEKS
- Payment Terms: T/T
- Supply Ability: 100000/MONTH



Product Specification

- Lcd Mode: Transmissive
- Touch: RTP
- Display Colors: 16.7M
- VA Size: 154 Mm * 57mm
- Resolving Power: 800*320
- Outline Size: 164.9 Mm * 69 Mm * 5.7 (T) Mm
- Tft Mode: TFT, Transmissive
- Lcd Size: 6.5 Inch
- Highlight: **6.5 Inch TFT LCD Display ,
800 x 320 Dots TFT Screen ,
24 RGB LCD Monitor**



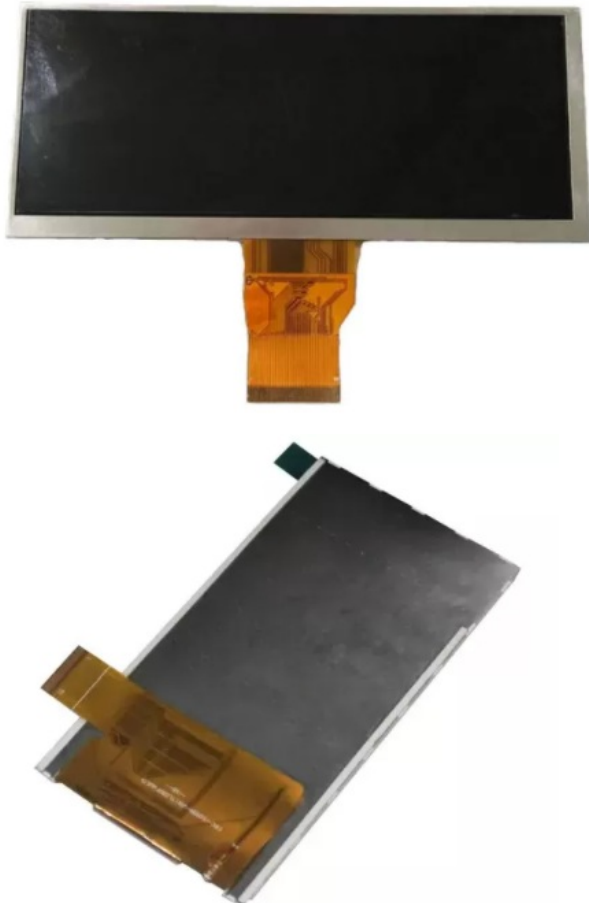
6.5" TFT Screen Transparent LCD Monitor Display 24 RBG 800 x 320 Dots

Product Details

Resolution	800 (RGB) × 320
Size	6.5 Inch
Viewing Direction	12 O'Clock
TFT Mode	TFT, Transmissive

Technical Specifications

ITEM	CONTENT	DESCRIPTION
1	Display outline size	164.9 mm × 69 mm × 5.7 (T) mm
2	VA size	154 mm × 57mm
3	Resolution	800 RGB (w) × 320
4	With/Without Touch screen	RTP / Without
5	Interface	24 RGB
6	Pixel Pitch	0.219 × 0.219 mm
7	Color	16.7 M Colors
8	Product Name	6.5 Inch TFT LCD Display



Applications

Industrial Automation Control

This display serves as an ideal human-machine interface for industrial equipment, including assembly line control consoles and machine tool operation panels. Its 800×320 resolution clearly displays critical parameters like equipment speed, pressure, and temperature. The 24-bit RGB interface ensures accurate color signal transmission for intuitive data reading. Designed for wide temperature operation, it performs reliably in factory environments with extreme temperatures.

Vehicle-Mounted Electronic Equipment

Perfect for vehicle navigation and information display terminals, this display's elongated shape fits seamlessly into vehicle dashboards. It clearly presents navigation routes, vehicle speed, and fuel consumption data. Some models offer enhanced visibility in direct sunlight, while shock-resistant and wide-temperature characteristics ensure performance in demanding travel conditions. It also functions well as an onboard entertainment secondary screen for music playlists and other content.

Smart Security and Traffic Terminals

Widely implemented in subway gates, access control systems, and security inspection equipment, this display effectively shows fares, station information, passage status, and surveillance alerts. In community access control systems, it displays visitor identity information and access records, enabling quick verification by security personnel.

Portable and IoT Devices

Ideal for portable medical monitoring devices and handheld POS systems, this display clearly presents physiological data on blood glucose meters and ECG monitors, or transaction details on cash registers. Its compact size and low power consumption extend battery life, while the 24-bit RGB interface maintains color accuracy for critical data visualization.

Small Information Display Terminals

Used in shopping mall directories, elevator displays, and advertising screens, this display's elongated form factor is perfect for showing scrolling text information like product promotions or floor guidance. The 800×320 resolution delivers crisp text and simple graphics, while flexible installation options accommodate various commercial space constraints.

Frequently Asked Questions

1. I want the LCD display 8 digits and the outline size is 65x30x2.8mm?

Answer: No problem. Please send us your specifications or drawing. If unavailable, you may provide samples - we'll recommend suitable standard products or customize based on your requirements.

2. This LCD is just what we want, but it is big size, do you have any smaller size? And the display content need to be changed a little.

Answer: For segment-type LCD modules requiring size or content modifications, new tooling is required for the LCD glass module.

3. This LCD display is HTN type, but I want STN type, can you make?

Answer: Yes, we can modify the display type according to your request.

4. I want to customize a new LCD module. Can you do?

Answer: Yes, we offer customization services. Please provide your drawings or specify requirements including outline size, display information (glass thickness, polarizer, display type, connector mode, storage/operating temperatures, supply voltage, viewing direction, drive conditions).

5. What is lead time for tooling?

Answer: Typically 15-25 days after drawing confirmation and tooling payment. Exact timing will be confirmed upon drawing approval.

6. Can you send us samples for checking?

Answer: Yes, sample orders are available for standard products.

7. What is the Lead Time?

Answer: For standard products in stock: 1 day after payment. For special mass production: approximately 15-30 days. We'll notify you if we can complete earlier.



Dongguan Bibuke Electronic Technology Co., Ltd.



+8613711912723



Jack@smartwinlcd.cn



lcdtftscreen.com

Shangyu Commercial Centre Chang'an, Dongguan, Guangdong, China 523881