

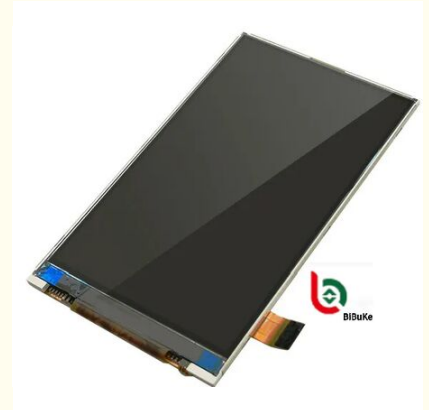


3.7 Inch MIPI Interface 480x800 Resolution TFT LCD Display with IPS All Viewing Angles

Our Product Introduction

Basic Information

- Place of Origin: China
- Brand Name: BBI
- Certification: ISO90001 RoHS
- Minimum Order Quantity: 1000
- Price: 0.7-7USD
- Packaging Details: CARTON
- Delivery Time: 3-47WEEKS
- Payment Terms: T/T
- Supply Ability: 100000/MONTH



Product Specification

- Module Size: 55.26x84.69x3.35 Mm
- Resolution: 480x800
- Brightness: 300 Cd/m²
- Storage Temperature: -30°C To 80°C
- Interface Types: MIPI (Customizable)
- Refresh Rate: 60 Hz
- Viewing Direction: IPS All Viewing Angles
- Pin Number: 24 Pins
- Highlight: **3.7 Inch TFT LCD Display, 480x800 Resolution LCD TFT Screen, MIPI Interface TFT LCD Module**



for more products please visit us on lcdtftscreen.com

Product Description

3.7" Inch MIPI Interface 480x800 TFT LCD Display

A high-performance 3.7-inch TFT LCD display featuring MIPI interface technology, designed for industrial and commercial applications requiring reliable visual performance.

Technical Specifications

Parameter	Specification
Product	3.7" Inch TFT Screen
Resolution	480x800
Driver IC	HX8369-A01
Touch Screen	Without (with PCAP Optional)
Cover Glass Dimension	Can Be Customized
Viewing Direction	IPS All Viewing Angles
Interface	MIPI (Customizable)
Connection	Connector Type (Can Be Customized)
Pin Number	24 Pins (Customizable)
Surface Luminance	300 Cd/m ² (nits)
Outline Dimension	55.26x84.69x3.35 mm
Operating Temperature	-20°C to +70°C

Product Overview

This 3.7-inch TFT LCD display features a 480x800 resolution with IPS technology, providing wide viewing angles of approximately 80 degrees in all directions. The MIPI interface ensures high-speed, low-power data transmission for stable connectivity with main control chips and peripheral devices.

Key Features

Working voltage: 2.8V to 3.5V (typical 3.2V) with low power consumption

Brightness: 300cd/m² (customizable up to 1000cd/m²)

Operating temperature range: -20°C to +70°C

Storage temperature range: -30°C to +80°C

Wide environmental temperature adaptability

Applications

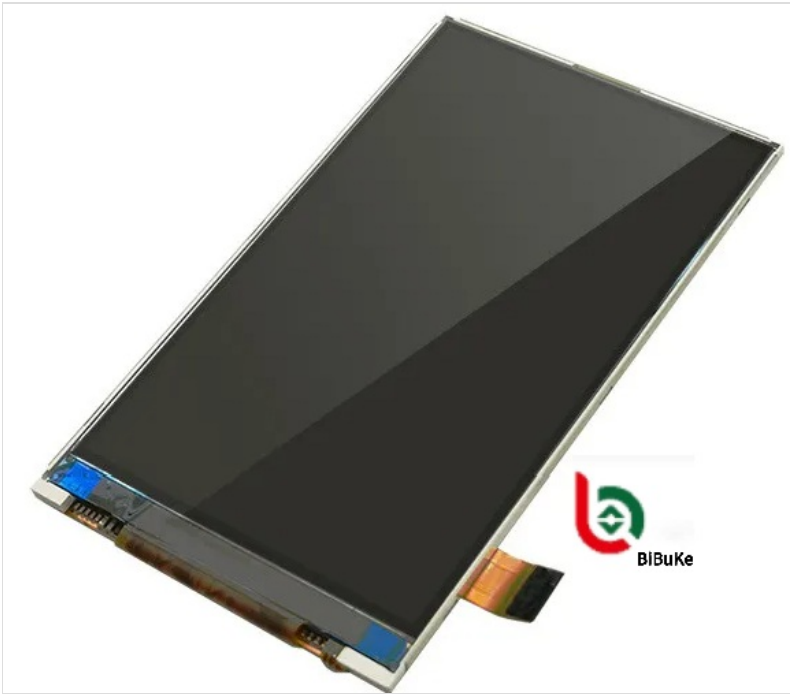
Mobile Devices: Portable data terminals, handheld game consoles

Medical Equipment: Blood glucose meters, blood pressure monitors

Industrial Control: Operation panels, controller displays

Vehicle Electronics: Rearview mirror displays, multimedia players

Smart Home Devices: Smart doorbells, temperature controllers





Frequently Asked Questions

I want the LCD display 8 digits and the outline size is 65x30x2.8mm. Is this possible?

Yes, we can accommodate custom specifications. Please provide your detailed specification drawing or samples. We can recommend suitable standard products or create custom solutions based on your requirements.

This LCD is what we want, but it's too big. Do you have smaller sizes? We also need minor display content changes.

For segment type LCD modules requiring size modifications or display content changes, we can create new LCD glass modules with custom tooling.

This LCD display is HTN type, but I want STN type. Can you make this change?

Yes, we can modify the display type according to your specifications and requirements.

Can you customize a new LCD module for our application?

Absolutely. Please provide your drawing specifications or detailed requirements including outline size, display information, glass thickness, polarizer type, display type, connector mode, temperature ranges, supply voltage, viewing direction, and drive conditions.

What is the lead time for custom tooling?

Typically 15 to 25 days after drawing confirmation and tooling charge payment. We will provide exact timelines upon drawing approval.

Can you provide samples for evaluation?

Yes, sample orders are available for quality verification and testing.

What is your standard lead time?

For standard products in stock, lead time is one day after payment. For mass production of custom orders, lead time is approximately 15-30 days. We will notify you promptly if we can complete orders earlier.



Dongguan Bibuke Electronic Technology Co., Ltd.



+8613711912723



Jack@smartwinlcd.cn



lcdftscreen.com

Shangyu Commercial Centre Chang'an, Dongguan, Guangdong, China 523881