

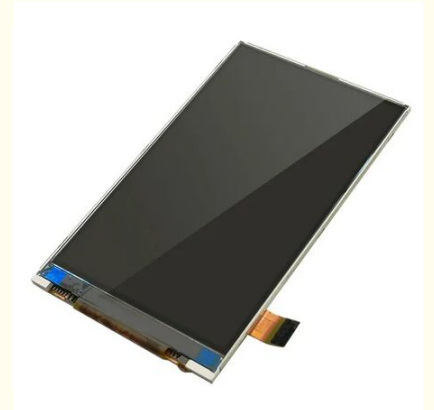
3.7 Inch IPS TFT Screen with 480x800 Resolution and MIPI Interface LCD TFT Display

Our Product Introduction

for more products please visit us on lcdtftscreen.com

Basic Information

- Place of Origin: China
- Brand Name: BBI
- Certification: ISO9001 RoHS
- Minimum Order Quantity: 1000
- Price: 0.7-7USD
- Packaging Details: CARTON
- Delivery Time: 3-4WEEKS
- Payment Terms: T/T
- Supply Ability: 100000/MONTH



Product Specification

- Pin Number: 24 Pins
- Touch Screen: Customizable
- Screen Type: LCD TFT
- Overall Dimensions: 55.26x84.69x3.35 Mm
- Interface Types: MIPI (Customizable)
- Backlighttype: LED
- Display Technology: TFT LCD
- Viewing Angle: All Viewing Angles
- Highlight: **3.7 Inch TFT LCD Display, 480x800 Resolution IPS TFT Screen, MIPI Interface LCD TFT Module**



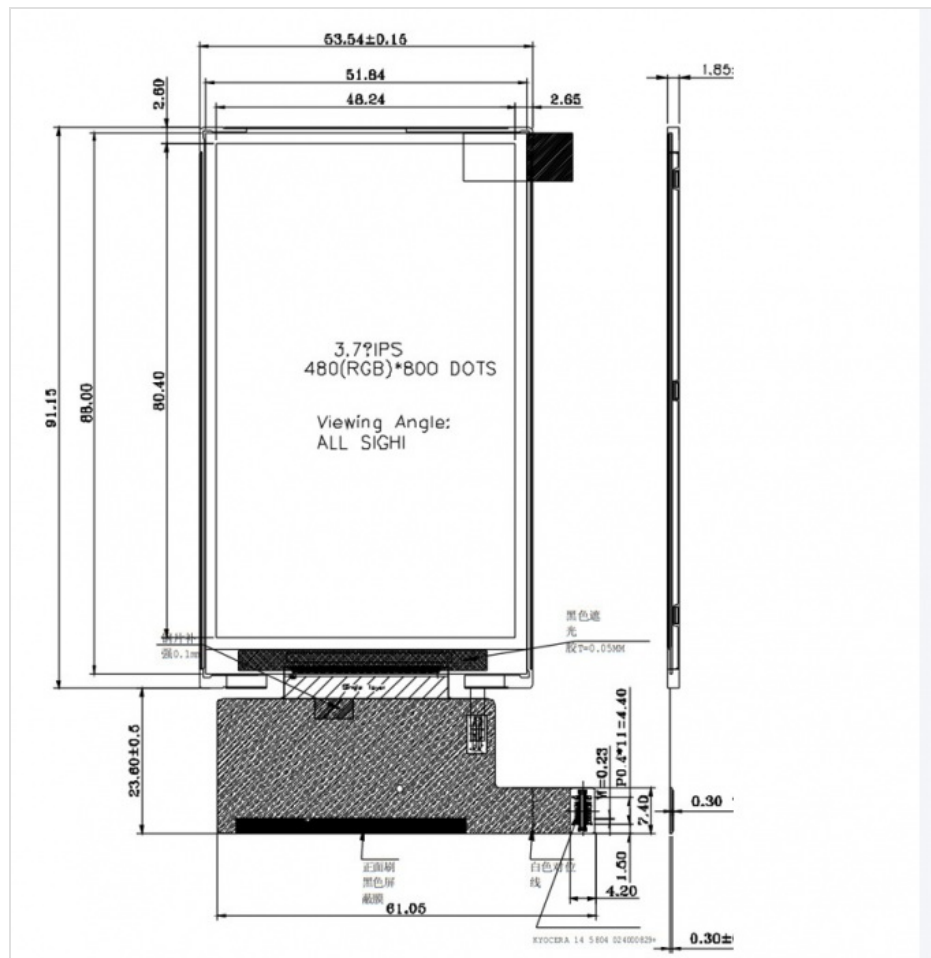
Product Description

3.7" Inch All Viewing Angles MIPI Interface 480x800 IPS TFT LCD Display

Product Specifications

Product	3.7" Inch TFT Screen	Resolution	480x800
Driver IC	HX8369-A01	Touch Screen	Without (with PCAP Optional)
Cover Glass Dimension	Can Be Customized	Viewing Direction	IPS All Viewing Angles
Interface	MIPI (Customizable)	Connection	Connector Type (Can Be Customized)
Pin Number	24 Pins (Customizable)	Surface Luminance	300 Cd/m ² (nits)
Outline Dimension	55.26x84.69x3.35 mm	Operating Temperature	-20 to +70

Technical Drawing



Product Overview

This high-resolution, full-view, high-speed interface TFT liquid crystal display module is specially designed for industrial intelligent equipment. It features an IPS wide-view panel, 480x800 vertical screen resolution, and MIPI DSI high-speed interface, balancing clarity, color accuracy, stability, and adaptability to industrial environments.

Core Parameters and Characteristics

Size and Resolution: 3.7 inches diagonal, 480x800 pixels vertical screen with fine dot pitch, suitable for displaying multiple lines of data, menus, and charts

Display Technology: IPS TFT-LCD with full view capability (left/right/top/bottom $\geq 80^\circ$), uniform color reproduction, no color bias, and better readability in strong light than ordinary TN screens

Interface: MIPI DSI (2/4 lane) high-speed serial interface with strong anti-interference, suitable for industrial motherboards and embedded platforms

Driver IC: HX8369, ST7701S with MIPI protocol support, mature drivers, and excellent compatibility

Brightness and Contrast: Typical 300-600 cd/m² (customizable to 1000+ nits); contrast ratio 800:1-1000:1 with deep black levels and sharp text display

Operating Temperature: Industrial grade -20 to +70 , storage -30 to +80 , suitable for harsh environments including workshops, outdoors, and vehicles

Power Supply: 3.0-3.3V single power supply with low power consumption, compatible with batteries and industrial power supply systems

Touch Options: Optional capacitive touch screen (CTP) with multi-touch support for industrial HMI and handheld terminals

Thickness: Module thickness typically 2.5-4mm, thin and lightweight design for embedded installation

Core Advantages for Industrial Applications

MIPI High-speed Stability: Fewer wiring requirements compared to RGB/8080 parallel interfaces, strong anti-interference capability, high transmission rates, and reliable performance in long-distance and complex electromagnetic environments

IPS Full View: Equipment installation angle flexibility with clear visibility from all sides, suitable for industrial cabinets, handheld devices, and vehicle displays

480x800 High Resolution: Delicate display quality on 3.7 inches, capable of handling complex UI, multiple parameter lists, real-time curves, and QR codes/barcodes

Wide Temperature and Long Life: Industrial-grade materials with extended backlight and panel lifespan, suitable for 7x24-hour operation in industrial control equipment

Low EMI and Easy Integration: MIPI differential signaling minimizes EMI; FPC flexible ribbon cable enables flexible installation in compact equipment structures

Typical Industrial Applications

Industrial HMI / Handheld Terminal: Portable programmers, on-site detectors, data collectors, intelligent meter displays

Industrial Control and Automation: PLC human-machine interfaces, frequency converter/servo panels, robot teaching devices, small industrial computer secondary screens

Medical and Health Equipment: Portable monitors, diagnostic instruments, rehabilitation equipment, home medical terminals

Internet of Things and Smart Gateways: Industrial gateways, edge computing boxes, environmental monitoring stations, energy management terminals

Vehicle and Construction Machinery: Forklift/construction vehicle dashboards, vehicle monitoring screens, agricultural machinery intelligent terminals, special vehicle displays

Security and Access Control: Facial recognition terminals, access control integrated machines, video intercoms, small monitoring host screens

Instrumentation: Oscilloscopes, spectrum analyzers, signal sources, laboratory analyzers, portable measurement equipment

Frequently Asked Questions

I want the LCD display 8 digits and the outline size is 65x30x2.8mm. Is this possible?

Yes, we can accommodate your requirements. Please send us your specifications or drawing. If you don't have specifications, you can provide samples and we'll recommend suitable products or customize based on your requirements.

This LCD is what we want, but the size is too big. Do you have smaller sizes? The display content also needs minor changes.

For segment type LCD modules, modifying outline size or display content requires a new LCD glass module. We would need to create new tooling for your specific requirements.

This LCD display is HTN type, but I want STN type. Can you make this change?

Yes, we can change the display type according to your request.

I want to customize a new LCD module. Can you do this?

Yes, we specialize in custom LCD modules. Please send your drawing or provide specifications including outline size, display information, glass thickness, polarizer type, display type, connector mode, storage and operating temperatures, supply voltage, viewing direction, and drive conditions.

What is the lead time for tooling?

Typically 15 to 25 days after drawing confirmation and tooling charge payment. We will provide exact timing when you confirm the drawing.

Can you send us samples for evaluation?

Yes, sample orders are available for evaluation purposes.

What is the lead time for production?

For standard products in stock, lead time is one day after payment. For mass production of custom products, lead time is approximately 15-30 days. We will inform you in advance if we can complete production earlier.



Dongguan Bibuke Electronic Technology Co., Ltd.



+8613711912723



Jack@smartwinlcd.cn



lcdftscreen.com

Shangyu Commercial Centre Chang'an, Dongguan, Guangdong, China 523881