



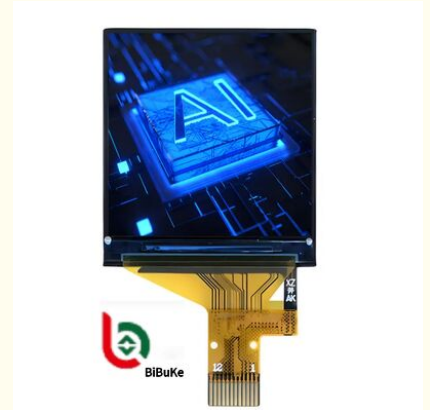
1.3 Inch 240x240 Dot Matrix Free Viewing Angle SPI LCD TFT Screen Display Module

Our Product Introduction

for more products please visit us on lcdtftscreen.com

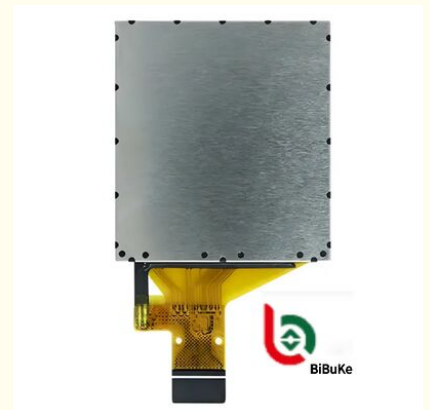
Basic Information

- Place of Origin: China
- Brand Name: BBI
- Certification: ISO9001 RoHS
- Minimum Order Quantity: 1000
- Price: 0.7-7USD
- Packaging Details: CARTON
- Delivery Time: 3-4WEEKS
- Payment Terms: T/T
- Supply Ability: 100000/MONTH



Product Specification

- Screentype: LCD TFT
- Display Type: TFT LCD
- Touch Screen: Customized
- Size: 1.3 Inches
- Active Area: 23.4×23.4mm Mm
- Transmissive Mode: Normally Black
- Pixel Pitch: 0.0975 (H) X 0.0975(V) Mm
- Brightness: 250 Cd/m²
- Highlight: **1.3 Inch LCD TFT Screen ,
240x240 Dot Matrix TFT LCD Display ,
Free Viewing Angle LCD Display Module**



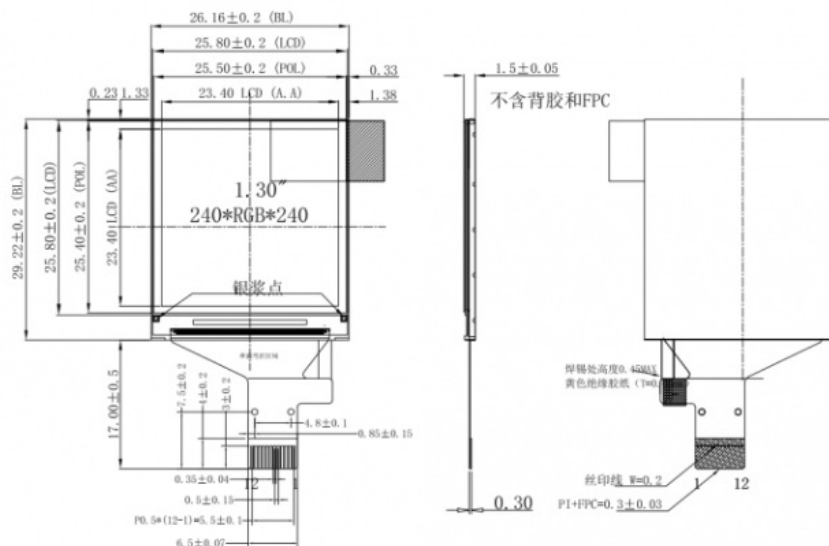
Product Description

1.3 Inch 240x240 Dot Matrix Free Viewing Angle SPI LCD Display

Technical Specifications

Item	Contents
LCD Size	1.3 inch (Diagonal)
Display Mode	Normally black
Resolution	240(H)RGB x 240(V)
Dot pitch	0.0975 (H) x 0.0975(V) mm
Active area	23.4(H) x 23.4 (V) mm
Module size	26.16(H) x 29.22(V) x 1.5Max(D) mm
Color arrangement	RGB Vertical stripe
Interface	SPI
Drive IC	ST7789P3
Luminance	250 (TYP) cd/m ²
Viewing Direction	All View
Backlight	2 White LED
Operating Temp.	-20 ~ + 70
Storage Temp.	-30 ~+ 80
Weight	TBD

Product Drawing



Pin Definition

No.	Symbol	Description
1	GND	Ground
2	LEDK	Cathode of Backlight
3	LEDA	Anode of Backlight
4	VCC	Power supply for Analog(2.8V-3.3V)

5	GND	Ground
6	GND	Ground
7	D/C	Register select pin D/C='1': Display data. D/C='0': Command data.
8	CS	Chip select pin("Low" enable)
9	SCL	Serial clock pin
10	SDA	Serial data input
11	RESET	LCM Reset pin
12	GND	Ground

Product Introduction

This 1.3-inch 240*240 dot matrix free-viewing SPI liquid crystal display is a square IPS full-view color TFT display module featuring small size, high resolution, and excellent embedded system compatibility.

Core Specifications

- Size: 1.3 inches diagonal with effective display area of 23.4*23.4mm
- Resolution: 240*240 pixels square dot matrix for detailed display
- Display Type: IPS TFT with free viewing angle technology
- Color: 65K/262K colors with natural color reproduction
- Driver Chip: ST7789 series with mature performance and strong compatibility
- Interface: 4-wire SPI requiring minimal I/O pins
- Electrical: 3.3V power supply with low power consumption
- Environment: Operating temperature -20 to +70 with wide temperature stability
- Structure: FPC flexible wiring or breakout board for easy integration

Core Applications

- Smart Wearables: Smart watches, bracelets, health monitoring devices
- Portable Medical Devices: Blood glucose meters, oximeters, blood pressure monitors
- Embedded and IoT: Smart home panels, sensor terminals, industrial instruments
- Consumer Electronics: Mini clocks, counters, MP3 players, Bluetooth speakers
- Automotive and Industrial: Tire pressure monitoring, recorders, handheld devices

Frequently Asked Questions

I want the LCD display 8 digits and the outline size is 65x30x2.8mm?

No problem. Please send us your specification or drawing. If you don't have specifications, you can provide samples and we'll recommend suitable products or customize based on your requirements.

This LCD is just what we want, but it is big size, do you have any smaller size? And the display content need to be changed a little.

For segment type LCD modules, modifying outline size or display content requires a new LCD glass module with new tooling.

This LCD display is HTN type, but I want STN type, can you make?

Yes, we can change the display type according to your request.

I want to customize a new LCD module. Can you do?

Yes, we can customize LCD modules. Please send your drawing or provide outline size, display information, glass thickness, polarizer, display type, connector mode, temperature specifications, supply voltage, viewing direction, and drive conditions.

What is leading time for tooling?

Typically 15 to 25 days after drawing confirmation and tooling charge payment. We'll provide exact timing upon drawing confirmation.

Can you send us samples for checking?

Yes, sample orders are available.

What is the Leading Time?

For standard products in stock: 1 day after payment. For mass production of special products: 15-30 days. We'll inform you if we can finish earlier.



Dongguan Bibuke Electronic Technology Co., Ltd.



+8613711912723



Jack@smartwinlcd.cn



lcdftscreen.com

Shangyu Commercial Centre Chang'an, Dongguan, Guangdong, China 523881